



College ESLG

Annual Report on Industry Survey on the Quality Review of the study program Management of Real Estate and Infrastructure (MA) for academic years 2017-2018 and 2018-2019

The Industry Survey took place on 03.02.2020 and the master program quality review form was sent to 100 constructions, real estate companies and other stakeholders from public institutions, including several ministries, Kosovo Cadastral Agency and other organizations of civil society.

The sampling is purposive. All these companies are either familiar with students of ESLG, or students of ESLG worked there for a period of time, or have other mode of cooperation.

From 100 companies only 22 responded in due time. The survey was electronic conducted in Survey Monkey with 10 questions and was sent via email to company and organization representatives. The questions were with Likert Scale from 1 to 5 (very dissatisfied to very satisfied).

The results of the survey have been presented below:

Table 1: Number of respondents presented in percentage that chose one of the options from 1 to 5 in Likert scale

Question	Very satisfied	Satisfied	Somewh at satisfied	Dissatisfied	Very dissatisfied
How satisfied are you with the quality of ESLG graduates of the study program?	70 %	30%			
How satisfied are you with the overall	70 %	30%			



College ESLG

employability of ESLG graduates of the study program after internship in your organization?					
How satisfied are you with the extent to which ESLG contributes to the research valuable for private sector and community?	60 %	40 %			
How satisfied are you with the community outreach and promotion of the mission of the study program?	50 %	50 %			
How satisfied are you with the innovation and entrepreneurial skills of ESLG graduates of the study program?	50 %	50 %			
How satisfied are you with the transformation of practical skills of ESLG graduates to real initiatives in your organization?	77.78 %	22.22 %			
How satisfied are you with the boosting of business performance of your company by ESLG graduates?	50 %	40 %	10 %		
How satisfied are you with the contribution of ESLG and its students to the appraisers' community in Kosovo?	60 %	40 %			
How satisfied are you with the level to which ESLG with its research can contribute with reference material to appraisers' and real estate managers' community ?	60 %	40 %			

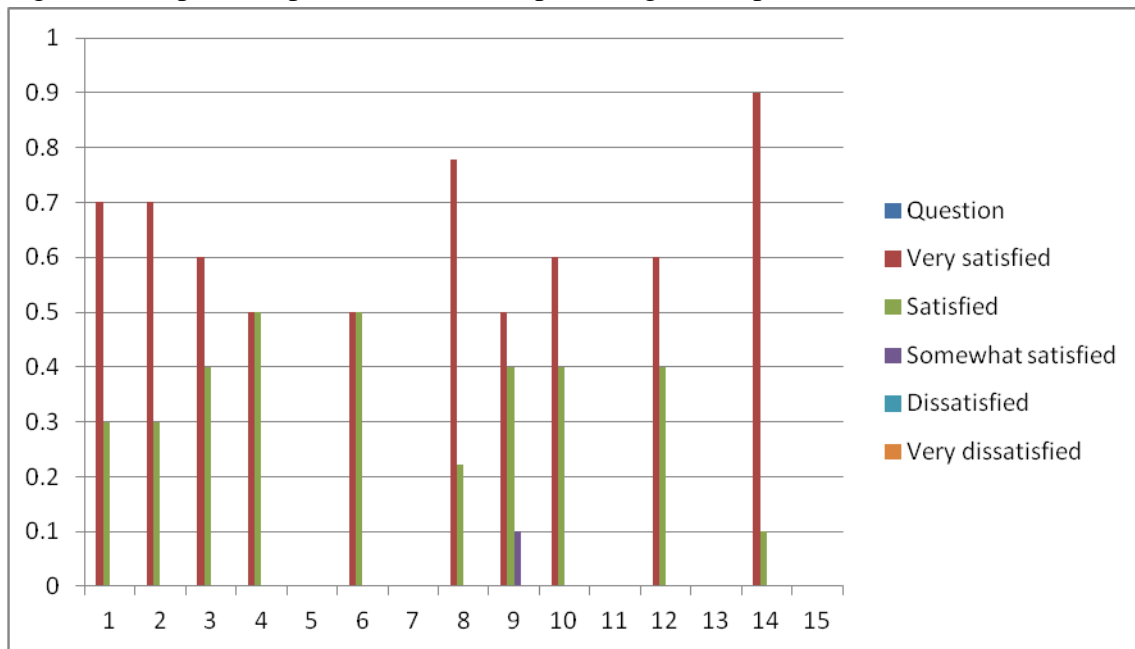


College ESLG

Please rate the overall quality of the study program?	90 %	10 %			

Graphically it has been presented below:

Figure 1: Graphical representation of the percentage of responses



Prepared by:

M.Sc. Jehona Hoxha, Quality Assurance Office, 05.02.2020



College ESLG

Approved by industry representatives Gent Sejdiu(KRG) and Bajram Hoxha (Hoxha Invest Group)



College European School of Law and Governance
Nazim Gafurri 33
10000 Prishtina Kosovo
Tel: 038 602 405
M: 045 456 666
E-mail: info@eukos.org